

# RAJIV MENON

CONTEMPORARY

Info@rmcontemporary.com

1311 N Highland Ave. 90028

rmcontemporary.com

Rajiv Menon Contemporary Presents

## LOOK

An exhibition exploring how style, fantasy, and a heightened sense of atmosphere can also reveal profound emotional truths



Shamir Iqtidar, *Lament*, 2025 Oil on canvas. 30 x 40 inches

Exhibition Dates: May 23 – June 20, 2025

Opening Reception: Friday, May 23, 2025 | 6 PM – 8 PM

Rajiv Menon Contemporary  
1311 N Highland Ave, Los Angeles, CA 90028

# RAJIV MENON

## CONTEMPORARY

Info@rmcontemporary.com

1311 N Highland Ave. 90028

rmcontemporary.com



Sajeela Siddiq



Sid Pattni



Bhasa Chakrabarti

### Featured Artists:

Ammama Malik

Bhasa Chakrabarti

Maithili Chaturvedi

Sajeela Siddiq

Sid Pattini

Arjuna Gunarathne

Ekta Aggarwal

Maya Seas

Shamir Iqtidar

Soft Geometry

Asad Ali Qulander

Irum Rahat

Paree Rohera

Shrimanti Saha

Zeehan Wazed

(Los Angeles, CA — May 12, 2025) — It's been over 40 years since the rise of Cinéma du Look, a French film movement from the 80's associated with directors like Leo Carax, Luc Besson, and Jean-Jacques Beineix. Focused on spectacle and irreverence, these films were often accused of choosing style over substance. Instead, they revealed the possibility for style to be substance in its own right. Cinema Du Look went on to permeate the culture, influencing visual culture well beyond film. Decades later, **Rajiv Menon Contemporary** presents LOOK, an exploration of how an aesthetic movement from one time and place can be reimagined in others. The young artists in LOOK explore questions of style, fantasy, and a heightened sense of atmosphere, but also reveal profound emotional truths. These artists speak to the legacy of cinema du look by seeing style and decadence as a vehicle to explore deeper questions of alienation and pleasure.

# RAJIV MENON CONTEMPORARY

[Info@rmcontemporary.com](mailto:Info@rmcontemporary.com)

1311 N Highland Ave. 90028

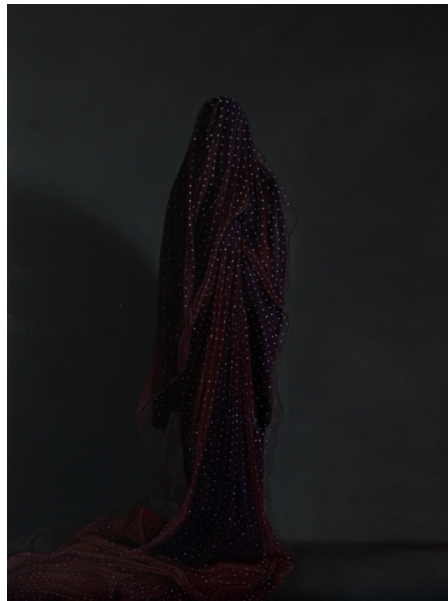
[rmcontemporary.com](http://rmcontemporary.com)

## ABOUT RAJIV MENON CONTEMPORARY

Rajiv Menon Contemporary is a new art gallery program focused on perspectives from emerging regions and their diasporas. With a particular—though not exclusive—focus on artists with origins in South Asia, Rajiv Menon founded the gallery to help bring these dynamic and innovative perspectives to the forefront of culture in Los Angeles. The space aims to help shape the next generation of collectors, empowering new voices to advocate on behalf of artists. From making contemporary art more accessible to new art collectors to placing emerging artists into major museums and private collections, Rajiv Menon Contemporary aims to start a movement and shift our collective culture from all directions.

## PRESS INQUIRIES:

[rajivmenoncontemporary@culturalcounsel.com](mailto:rajivmenoncontemporary@culturalcounsel.com)



Ammama Malik